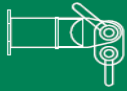



### What size shackle do I need?

**MOD 34**



TOP: 25t  
LOWER: 17t

**MOD 50**



TOP: 35t  
LOWER: 25t

## Components per Set

ITEM	Maintenance Range	Portable Range			Heavy Range		
	MOD 6	MOD 12	MOD 24	MOD 34	MOD 50	MOD 70(H)	MOD 110(H)
0.1m	1	-	-	-	-	-	-
0.2m	1	-	-	-	-	-	-
0.25m	-	1	-	-	-	-	-
0.3m	1	-	-	-	-	-	-
0.5m	-	1	1	1	1	1	-
0.6m	1	-	-	-	-	-	-
0.75m	-	1	-	-	-	-	-
1m	1	1	1	1	1	1	1
1.5m	-	1	-	-	-	-	-
2m	-	-	2	3	1	1	1
3m	-	-	-	-	-	-	-
4m	-	-	-	-	2	2	3
6m	-	-	-	-	-	-	-
End Unit	2	2	2	2	2	2	2
Drop Link	2	2	2	2	2	2	2

## MOD 34

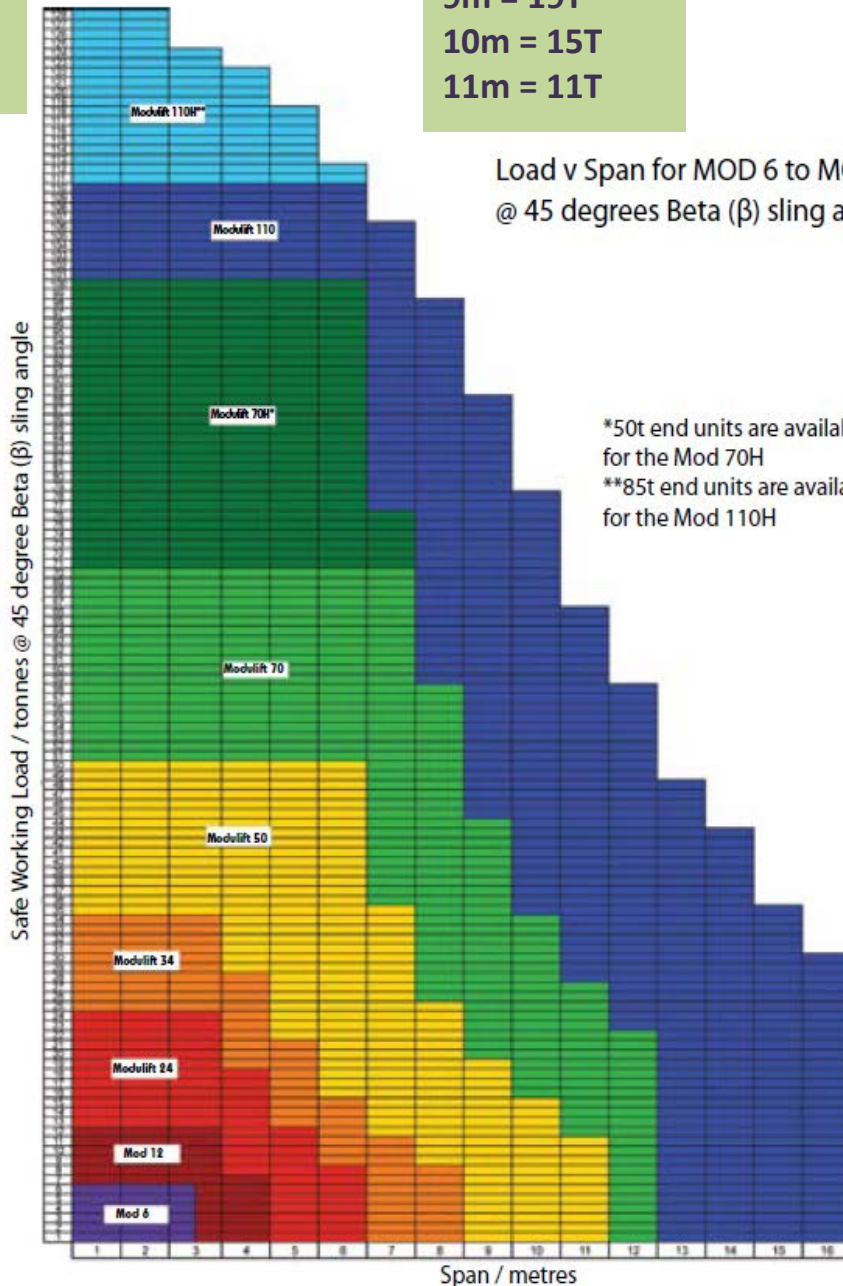
Up to 34 tonnes at 3m.  
Up to 8m at a lower capacity.

3m = 34T  
4m = 28T  
5m = 21T  
6m = 15T  
7m = 11T  
8m = 8T

## MOD 50

Up to 50 tonnes at 6m.  
Up to 11m at a lower capacity.

6m = 50T  
7m = 35T  
8m = 25T  
9m = 19T  
10m = 15T  
11m = 11T



Load v Span for MOD 6 to MOD 110H  
@ 45 degrees Beta ( $\beta$ ) sling angle (STV)

\*50t end units are available  
for the Mod 70H  
\*\*85t end units are available  
for the Mod 110H